

HONDA



**JAZZ
CROSSTAR**

e:HEV

Your **new** Honda Jazz Crosstar

04 Hybrid

06 Performance

08 Design

14 Technology

18 Safety

22 Your Jazz Crosstar





Model shown is the Honda Jazz 1.5 i-MMD Crosstar Advance in Fjord Mist Pearl.

A self-charging hybrid experience

Our next-generation Honda hybrid tech in the new Jazz Crosstar is designed for a dynamic driving experience that combines a 1.5 litre engine with a lithium-ion battery. The intelligent **e:HEV self-charging hybrid powertrain** automatically selects from three drive modes: Electric, Hybrid or Engine.

Electric Drive delivers instant acceleration from standing, almost silent cruising and 100% electric drive.

Hybrid Drive combines the petrol engine and two electric motors for a highly efficient full hybrid performance.

Engine Drive uses the petrol engine to maintain higher speeds – and charges the battery while doing so.

SELF-CHARGING HYBRID
NO NEED TO PLUG IN

ADVANCED HYBRID TECHNOLOGY
EFFORTLESSLY SWITCHES DRIVE MODES





e:HEV

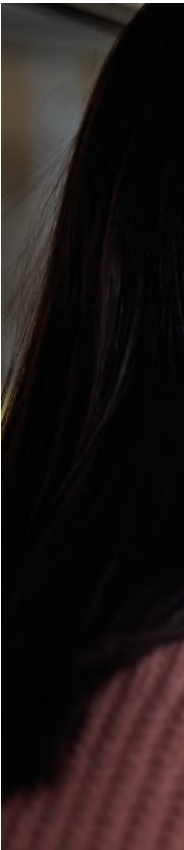
A full hybrid performance

The Jazz Crosstar's responsive, self-charging full hybrid engine is fun to drive and fit for life, supplying an immense 253Nm of torque to get you going, coupled with a lively 122PS electric motor.

It means **less fuel and fewer emissions**, making it easier on the environment and your wallet – leaving you to enjoy instant power and an effortless driving experience every time.

ELECTRIC DRIVE
INSTANT LINEAR ACCELERATION

HYBRID DRIVE
REAL-WORLD EFFICIENCY







The Jazz Crosstar Advance

Developed with active lifestyles in mind, the Crosstar is all about the outdoors: **a tough, muscular style** and a distinctive grille design add presence, and a raised ride height offers easier access and a commanding view of the road ahead.

Black mirror covers and striking silver finishes get you noticed, as do the sleek, integrated roof rails. And inside, intelligently designed upholstery and refined finishes make for a stylish drive.

**HEATED LEATHER
STEERING WHEEL**

**16" UNIQUE
BLACK ALLOY WHEELS**

Feel good inside

Never tire in the front seats with **anti-fatigue properties** that provide limousine-class levels of comfort. Other thoughtful touches include a wide centre armrest and plenty of storage throughout.

Wherever you're going, look around you: ultra-thin but immensely strong A-pillars and hidden wipers offer an enhanced field of vision for a confidence-inspiring driving position, flooding the cabin with light and a sense of spaciousness that brings the outdoors in.

STAY CONNECTED
USB PORTS IN FRONT AND BACK

HEATED
FRONT SEATS









Winning the **space** race

Whatever you fit into your life, fit it into the new Jazz Crosstar with **ingenious rear Magic Seats** that give you the versatility you want right when you need it.

Fold flat and dive-down for extra load space, tip up to utilise the car's full height from floor to ceiling, or choose another combination: one easy motion gives you the flexibility to carry almost anything.

1,205 LITRES
CLASS-LEADING BOOT CAPACITY

ONE-MOTION MAGIC SEATS
A HELPING HAND



The world at **your** fingertips

The new Jazz Crosstar seamlessly connects the dots with today's infotainment tech: DAB digital radio provides enough music for your own private festival, and the 9" touchscreen's **smartphone-style display** works with Android Auto and Apple CarPlay* in a way you'll find familiar.

For hands-free help, the voice-activated **Honda Personal Assistant†** is your portal to the outside world: check the weather, find your favourite station or choose a restaurant along your route – this is AI with a human touch.

GARMIN NAVIGATION SYSTEM
A FUSS-FREE WAY TO GET AHEAD

BUILT-IN APPS
FOR EASE OF USE

* Apple CarPlay is a trademark of Apple Inc., registered in the U.S. and other countries.

† Service fees apply, for more information check the Honda website.

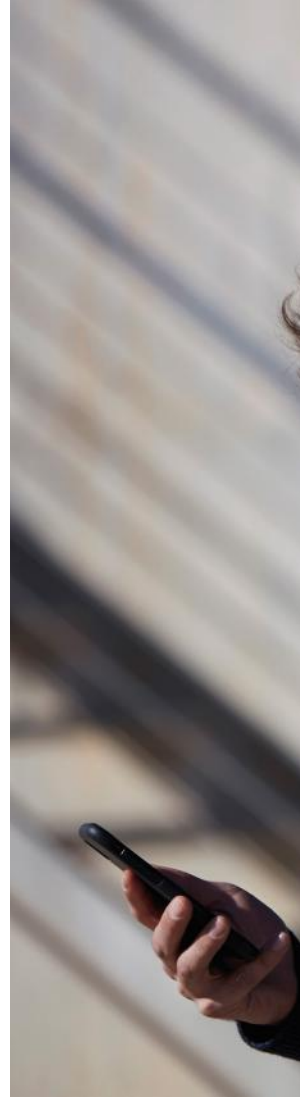
My Honda+ app

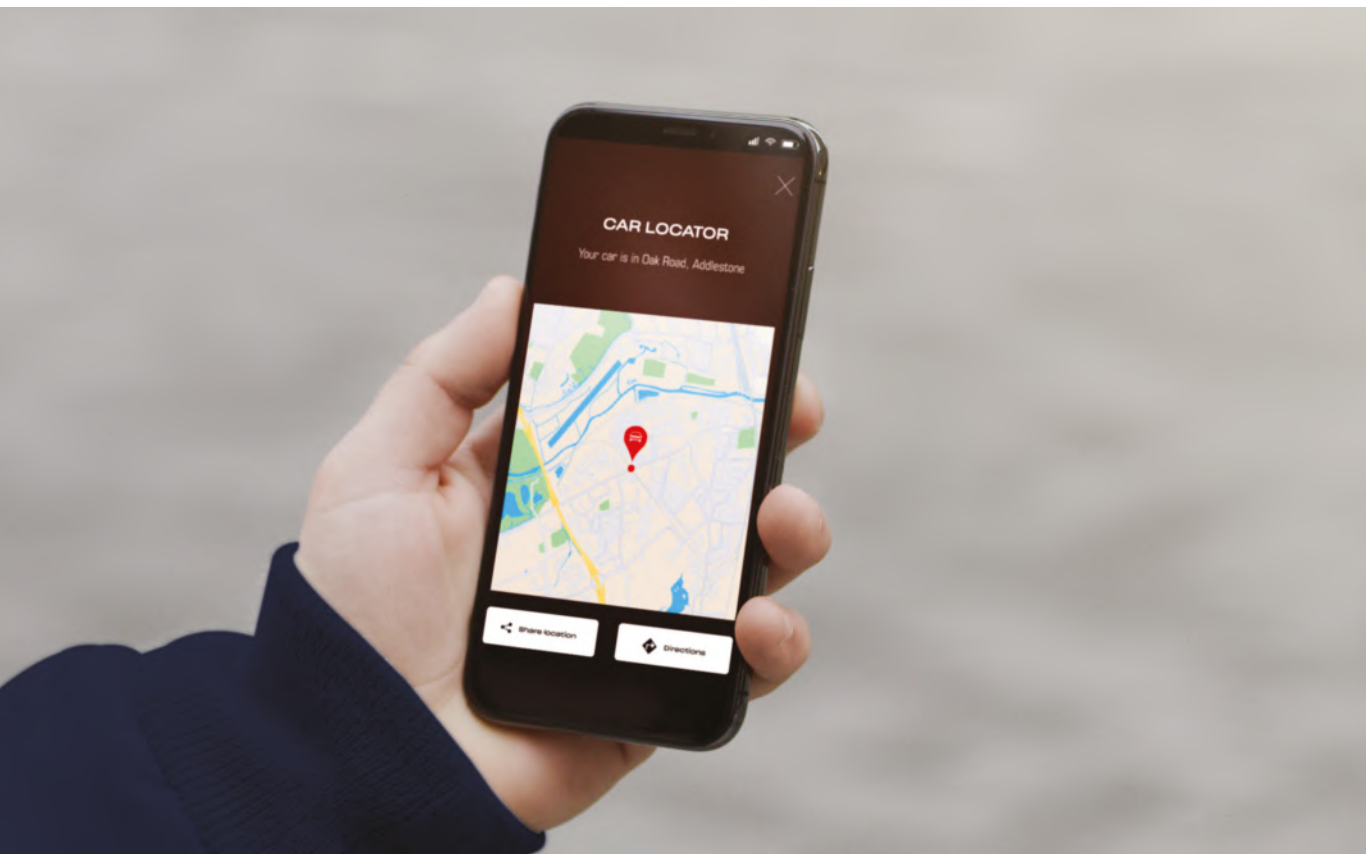
Begin your journey from the sofa with My Honda+, the app that seamlessly links your smartphone directly to your Jazz Crosstar.

Get ready to ride and check your vital stats from the virtual dashboard, swap your key for your phone with **Honda Remote Lock-Unlock***, and pinpoint where you parked with the in-built car-locator feature.

GEOFENCE SECURITY SYSTEM
ALWAYS KNOW THE LOCATION
OF YOUR JAZZ CROSTAR

ROADSIDE ASSISTANCE
FOR PEACE OF MIND ON
LONG JOURNEYS







Safety comes as standard

Honda SENSING technology reads road signs and driving conditions before you do, pre-empting any potential hazards with features like the Traffic Sign Recognition System, Lane Departure Warning, Collision Mitigation Braking System and Intelligent Speed Limiter.

It's all because we want you and your passengers to enjoy the journey in comfort, safe in the knowledge you're prepared for whatever comes your way.

Wherever you're going, driving a Honda is driving with a sense of security.

Honda SENSING innovation

Collision Mitigation Braking System

If there is a possibility of a collision with a vehicle or a pedestrian, the system will alert you whilst simultaneously reducing your speed, helping to minimise the severity of any impact. The system works even in the dark, with night-time operation to detect pedestrians or cyclists where there is no street lighting; it even applies the brakes if oncoming vehicles cut across or turn into your path.

Lane Departure Warning

If the car moves out of its lane without you activating the indicator, then alerts will flash and sound to help bring your attention to correcting the lane drift.

Traffic Sign Recognition System

Reminders of road-sign information such as the current speed limit.

Lane Keeping Assist System

Helps keep you in the middle of your lane, providing a less stressful driving experience by reducing the need for steering correction movements and driving effort on the motorway.

Intelligent Speed Limiter

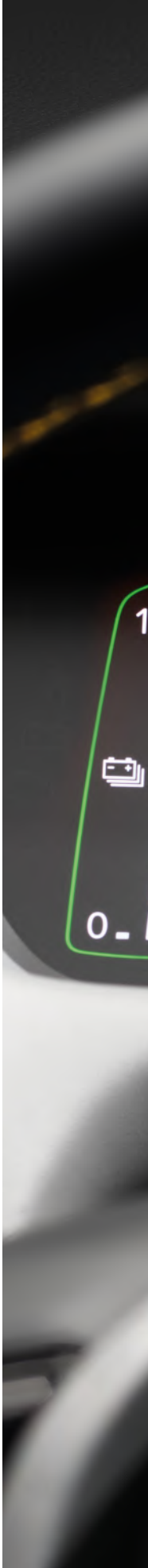
Automatically sets the speed limit as detected by the Traffic Sign Recognition System.

**Adaptive Cruise Control
with Low-Speed Following**

Maintains a constant speed and a set following interval behind the vehicle in front, and can decelerate and stop automatically.

Auto High-Beam Headlights

Detects a vehicle in front, including oncoming vehicles and automatically switches between high beam and low beam.





Specifications

The **Crosstar Advance** grade includes:

- Water-Repellent Fabric Upholstery
- 16" Unique Alloy Wheels
- Black Door Mirrors and Handles
- Crosstar Styling (Front and Rear Bumper, Front Fog Light Garnish, Silver Fender and Side Sill Garnish)
- Privacy Glass
- Leather Shift Knob
- Heated Steering Wheel
- Front Heated Seats
- Magic Seats
- Climate Control Air Conditioning
- Multi Information Display
- Honda CONNECT with GARMIN Navigation, 9" Touchscreen, AM/FM/DAB Digital Radio, Apple CarPlay* and Android Auto™
- Steering Wheel Remote Audio Controls
- 4 Speakers
- Mirror and Window Key Fob Operation
- Automatic Up/Down Windows
- Roof Rails
- 2 Front USB Ports
- 2 Rear USB Ports
- LED Front Fog Lights
- Rear View Camera
- Parking Sensors

**WATER-REPELLENT
UPHOLSTERY**

**LEATHER
SHIFT KNOB**

Colours

We have created a wide range of colours that perfectly suit the stylish new Jazz Crosstar, which are complemented by our high-quality upholstery.



Premium Crystal Red Metallic



Crystal Black Pearl



Fjord Mist Pearl



Premium Sunlight White Pearl

Accessories

1. Cross bars

These cross bars come with anti-theft locks and comply with the rigorous safety requirements. It has a maximum carrying capacity of 45kg or two bicycles.

2. Thule Roof Bicycle Rack - Expert 298

The universal, easy-to-install, bike carrier is designed for easy loading and unloading of your bike. It is lockable to prevent your bike from theft.

– Maximum bicycle load: 20kg.

3. Tailgate spoiler

If a sophisticated look is what you want, this Honda genuine spoiler is exactly what you need. Only the highest quality accessories can pass Honda's extensive testing. The Honda genuine spoiler is specifically developed to match each individual car model. Furthermore, it is fully integrated into the car's bodywork.

4. Elegance floor mats

Black/silver - These elegant and comfortable fitted tufted mats, with a black nubuck binding, have a woven Jazz emblem for durability. One set includes front and rear mats.

5. Cargo pack

If you frequently transport luggage or specialised equipment, the Cargo Pack will help keep it organised and secure. **The pack includes:** a boot tray without dividers, a LED boot light, a boot sill decoration and a tailgate strap.

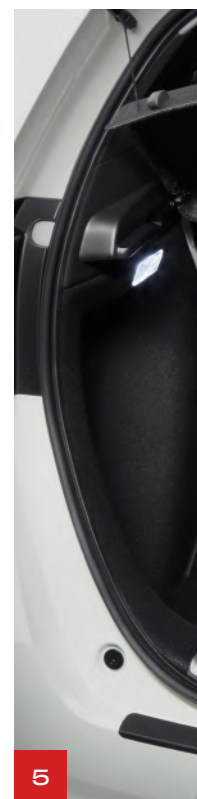
6. Detachable tow bar

With this detachable tow bar, you can pull your trailer or carry bikes with no worries at all.

– Maximum towing capacity: 500kg

– Maximum vertical load: 50kg

– Includes a 13-pin trailer harness





	Crosstar Advance 1.5 i-MMD Hybrid Automatic
Engine	
Displacement (cc)	1498
Valve Train	Chain Driven DOHC
Emission Standard	EURO 6D
Fuel Required	UNLEADED(95)
Performance	
Engine Maximum Power (kW@rpm)	79 @ 6000-6400
Engine Maximum Power (PS@rpm)	107 @ 6000-6400
Engine Maximum Torque (Nm@rpm)	131 @ 4500-5000
Electric Motor Max. Power (kW [PS])	90 [122]
Electric Motor Max. Torque (Nm)	253
0 → 100km/h (seconds)	9.7
Maximum Speed (km/h)	175
Sound Level Drive-by dB(A)	65
Fuel Economy & Emissions – Worldwide Harmonised Light Vehicle Test Procedure (WLTP)*	
Low – FC (l/100km)	3.9
Medium – FC l/100km	3.9
High – FC (l/100km)	4.2
Extra High – FC l/100km	6.2
Combined – FC (l/100km)	4.8
Combined CO2 g/km	108
Range CO2 g/km	88-140
Dimensions	
Overall Length (mm)	4105
Overall Width (mm)	1725
Overall Width including Door Mirror (mm)	1966
Overall Height – Unladen (mm)	1556
Wheelbase (mm)	2520
Track Front (mm)	1487
Track Rear (mm)	1485
Ground Clearance – Non Load (mm)	146
Ground Clearance – Full Load (mm)	120.4
Turning Circle – at Body (m)	10.1
Turning Radius – at Wheel Centre (m)	5.0
Steering Wheel Lock to Lock (Wheel Turns)	2.63
Capacity (Litres, VDA Method)	
Boot Capacity – Rear Seat Up	304
Boot Capacity – Rear Seat Down Load to Window	844
Boot Capacity – Rear Seat Down Load to Roof	1205
Max. Seating Capacity (Persons)	5
Fuel Tank (Litres)	40
Weight	
Kerb Weight (kg)	1248-1253
Max. Permissible Weight (kg)	1690
Max. Permissible Axle Weight – Front/Rear (kg)	946/805
Max. Roof Load (kg)	50
Max. Towing Weight (kg) – Braked	500

	Crosstar Advance 1.5 i-MMD Hybrid Automatic
Safety	
Driver SRS Airbag	◆
Passenger SRS Airbag with Cut-Off Switch	◆
Side Airbags (Front)	◆
Side Curtain Airbags (Front and Rear)	◆
Front Centre Airbag	◆
Front Driver's Seat Knee Airbag	◆
Passenger Seat Knee Airbag	◆
eCall** (Europe)	◆
Front and Rear Seatbelts with Emergency Locking Retractor	◆
ABS (Anti-Lock Braking System)	◆
Brake Assist	◆
Vehicle Stability Assist	◆
ISOFIX Points (Outer Rear Seats)	◆
Emergency Stop Signal	◆
Deflation Warning System	◆
Collision Mitigation Braking System	◆
Forward Collision Warning	◆
Lane Keeping Assist System	◆
Lane Departure Warning	◆
Road Departure Mitigation	◆
Adjustable Speed Limiter	◆
Intelligent Speed Limiter	◆
Traffic Jam Assistant	◆
Traffic Sign Recognition System	◆
Low Speed Following	◆
Security	
Immobiliser System	◆
Security Alarm System	◆
Remote Central Locking with Two Key Fobs	◆
Smart Entry and Start	◆
Parcel Shelf	◆
Interior Trim	
Water-Repellent Fabric/Leather* Interior	◆
Interior Panels – Soft Pad Leather*	◆
Leather Steering Wheel	◆
Leather Shift Knob	◆

	Crosstar Advance 1.5 i-MMD Hybrid Automatic	Crosstar Advance 1.5 i-MMD Hybrid Automatic
Function & Technology		
Econ Mode	◆	◆
Agile Handle Assist	◆	◆
Hill Start Assist	◆	◆
Electric Power Steering with Variable Gear Ratio	◆	◆
Electronic Parking Brake with Automatic Brake Hold	◆	◆
Idle Stop	◆	◆
Multi Information Display	◆	◆
Comfort & Convenience		
Adaptive Cruise Control	◆	◆
Climate Control Air Conditioning	◆	◆
Auto Wipers	◆	◆
Cargo Net Hook	◆	◆
Rear Parking Camera	◆	◆
Parking Sensors (Front and Rear)	◆	◆
Auto Up/Down Windows	◆	◆
Remote Electric Windows (Key Fob Operation)	◆	◆
Tilt and Telescopic Steering Wheel	◆	◆
Door Mirrors – Electric Adjustable and Heated	◆	◆
Door Mirrors – Electrically Retractable	◆	◆
Door Mirrors – Remote Retractable (Key Fob Operation)	◆	◆
Sunvisor Vanity Mirrors	◆	◆
Accessory Socket (Front)	◆	◆
Driver Seat Manual Height Adjust	◆	◆
Driver and Front Passenger Seat Armrest	◆	◆
Front Seat Back Pockets	◆	◆
Front Heated Seats	◆	◆
Heated Steering Wheel	◆	◆
Magic Seats	◆	◆
Interior Lights		
Map Light (Front)	◆	◆
Courtesy Light	◆	◆
Sunvisor Vanity Mirror Illumination	◆	◆
Boot Light	◆	◆
Audio & Communications		
Honda CONNECT with GARMIN Navigation (9" Touchscreen, AM/FM/DAB Digital, Apple CarPlay/Android Auto™)	◆	◆
2 Front USB Ports	◆	◆
2 Rear USB Ports	◆	◆
4 Speakers	◆	◆
Steering Wheel Remote Audio Controls	◆	◆
Bluetooth™ Hands Free Telephone (HFT)	◆	◆
Wireless Apple CarPlay	◆	◆
Exterior		
Shark Fin Antenna	◆	◆
Black Coloured Door Handle	◆	◆
Black Coloured Door Mirrors	◆	◆
Crosstar Styling (Front and Rear Bumper/Front Fog Garnish/Silver Fender and Side Sill Garnish)	◆	◆
Roof Rails	◆	◆
Privacy Glass	◆	◆
e:HEV Emblem	◆	◆
Exterior Lights		
LED Headlights	◆	◆
Auto Headlights	◆	◆
Manual Auto Headlight Adjuster	◆	◆
Headlight Auto On/Off Timer (Coming/Leaving Home Function)	◆	◆
Highbeam Support System	◆	◆
Dusk Sensing Auto Lights	◆	◆
LED Front Fog Lights	◆	◆
LED Daytime Running Lights	◆	◆
LED Rear Lights	◆	◆
Wheels		
16" Centre Cap (3D Chrome H) Colour Change	◆	◆
Tyres 185/60 R16 86H	◆	◆
Tyre Repair Kit	◆	◆

◆ Standard – Not available

* Synthetic Leather

** eCall functionality is subject to 2G/3G network availability.

† Fuel consumption figures, sourced from EU regulated laboratory test results, are provided for comparison purposes and may not reflect real-life driving experience. The Honda Jazz Crosstar has been subjected to the WLTP CO2 and fuel consumption testing cycle in accordance with Commission Regulation (EU) 2017/1151. WLTP figures better reflect the actual performance of the vehicle when driven on the road. During the transition phase between NEDC (the former testing regime) and WLTP, NEDC values for CO2 and fuel consumption will remain available in accordance with Commission Regulation (EU) 2017/1153.



BLUE SKIES FOR
OUR CHILDREN

Extend the Honda Jazz Crosstar experience at honda.co.uk/jazz

MARKET TO INSERT RELEVANT LEGAL COPY

LOCAL MARKET ADDRESS



Honda sources paper responsibly from manufacturers within the EU.
Please don't bin me, pass me onto a friend or recycle me.

HONDA