



# New SANTA FE









# We have passion for progress.

The “can-do” spirit is at the heart of Hyundai’s heritage. It’s the attitude of progressing, no matter what. From humble beginnings, this vision has driven us to seek new challenges, encapsulated since our founding in the name ‘Hyundai’ – meaning ‘modern times’.

It’s the persistent curiosity for what lies ahead. Of always chasing the next. What was once a man’s desire for better is today the ethos of an entire company. As our founder said: “How does one know it’s impossible if one hasn’t tried it?”

Progress doesn’t happen by chance. We’re always pushing the borders of the possible, building tomorrow’s technology today, and powering the future with an ever-evolving range of zero-emission engines, seamless in-car connectivity and more.

We’ve come a long way. And we won’t stop here. Next awaits.





# Power, poise, and purpose.

The New SANTA FE brings a new level of refined power and poise to driving, with advanced safety systems, a completely re-designed body, plus new and more efficient powertrains giving you the drive of your life.



Car shown: New SANTA FE Hybrid Ultimate in Taiga Brown.

With more power, control, and fewer emissions, the New SANTA FE SUV delivers sophisticated performance on every level. From the inside out, passenger comfort is matched by safety and convenience, with Smartsense safety systems that adapt and adjust to road conditions and personal preferences, and intuitive controls to make driving easier, more relaxed, and safer, no matter the journey. Improved load space, superior handling and refined power means the New SANTA FE takes everything in its stride, and the newly sculpted body means it does it all in style. For the challenges ahead, the New SANTA FE is purpose personified.



Car shown: left-hand drive New SANTA FE Hybrid Ultimate in Taiga Brown.









Car shown: New SANTA FE Ultimate in Taiga Brown.

# Make a clean getaway.

The New SANTA FE delivers efficiency and flair with lower emissions, new Hybrid powertrains, adaptive terrain suspension and automatic transmission throughout the range.



New SANTA FE Ultimate. Car shown not to UK Specification.

With a choice of flexible powertrains and drive transmissions, the New SANTA FE brings clean, responsive power to your drive. The new 1.6T GDi engine comes in two formats, both delivering efficient power via automatic transmission. The Hybrid has a 1.49kWh battery and is available in four- or two-wheel-drive. The Plug-in Hybrid has a larger 13.8kWh battery and is available in four-wheel drive only. Cleaner driving comes with reduced emissions from the new engines, and driving flexibility is offered by Terrain Driving Mode, allowing you to select the most efficient power delivery for the road you travel.



# Signature styling.

Fine lines and daring design give the New SANTA FE a bold and distinctive presence on the road.



Car shown: New SANTA FE Premium.

The powerful front of the New SANTA FE features an imposing grille and sculpted bumper for a muscular silhouette, and boasts T-shaped light clusters for all-round visibility and increased light throw. Redesigned alloy wheels add a sense of proportion and poise, and the new rear bumper completes the look of the New SANTA FE with high visibility T-form rear lights for an overall impression of balanced power and sublime styling.



Car shown: New SANTA FE Ultimate in Taiga Brown.













Ventilated front seats standard across all trim levels.



Floating high console with shift-by-wire transmission standard across all trim levels. Aluminum finish standard with Luxury pack.



Quilted Nappa leather seat available on Ultimate trim with Luxury Pack.

# The inside story.

High specification driver controls and information systems in a spacious interior.



Full 12.3" TFT cluster standard on Ultimate trim.

The interior of the New SANTA FE has been reimagined for today's driver. Increased visibility from a lowered dashboard gives a clear view of the immediate surrounds, and a stunningly designed centre console includes the new 10.25" touchscreen. With instant access to BlueLink, smart phones and more, the driving position has been completely upgraded for total control. A new 12.3" instrument cluster gives expansive space for performance information, and mood lighting throughout adds personal expression to truly make the car your own. Shift by wire technology gives convenience at the push of a button, and adds even more space to the capacious interior.



# Control through connectivity.

Take charge of a bigger world with personalised control.



The New SANTA FE's internal command systems take connectivity to another level. With voice control and personalised driver profiles, the New SANTA FE recognizes your preferences and automatically adjusts connectivity and comfort for individual control and command. BlueLink and Bluetooth® tightly sync your phone to in-car smart systems for hands-on or remote control, and the wireless charging pad means your phone is always topped up. With intuitive audio and navigation control from the 10.25" touchscreen display, driving and entertainment systems are clearly laid out before you for immediate access and instant control.



Wireless phone charging pad standard across all trim levels.



KRELL premium audio standard across all trim levels.



eCall standard across all trim levels.



10.25" touchscreen audio visual navigation standard across all trim levels, also used as the surround view monitor on Ultimate trim.















# Street Smart for Total Safety.

When it comes to safety, forewarned is forearmed. With Smartsense safety systems, risks are recognised and autonomous action taken before hazards arise.



**Lane Follow Assist (LFA):** LFA helps prevent accidental lane departure and keeps your vehicle safely centered within the lane. Using a forward camera to recognise the intended lane, LFA will automatically provide corrective steering input to help maintain the centre path. This not only detects road lines but also the road edge.



**Forward Collision Avoidance Assist - Junction Turning (FCA-JX):** Smart sensors and cameras at the front of the New SANTA FE link to smart systems to warn of vehicles, cyclists or pedestrians in your path and alert drivers to oncoming vehicles when turning across lanes, automatically applying the brakes when necessary.



**Highway Driving Assist (HDA):** For additional safety, Highway Driving Assist keeps the New SANTA FE at your pre-set speed and maintains road position in your lane. HDA monitors the distance to the vehicles ahead, reducing speed automatically when the gap closes. When the safe distance is restored, HDA resumes the pre-set cruising speed.



**Remote Smart Parking Assist (RSPA):** Parking in a tight space is simple with RSPA. Using the smart key fob controls, the New SANTA FE can be driven or reversed into and out of narrow bays from up to 4m away — at the touch of a button.



**Rear Cross-traffic Collision Avoidance Assist (RCCA):** Sensors detect vehicles approaching from both sides when the New SANTA FE is in reverse, avoiding collisions in congested or reduced visibility environments such as car parks.



**Safe Exit Assist (SEA):** To protect your passengers, Safe Exit Assist detects vehicles approaching from behind, sounding a warning and locking the door to ensure awareness and safety for every passenger.

The New SANTA FE protects its passengers from risks all round. With 360° awareness of traffic, pedestrians, and road conditions, the New SANTA FE feeds multiple streams of information to the driver with audible alarms and kinetic adjustments where necessary — without distracting the driver. Taking care of your safety, vigilant systems allow you to focus on the road ahead as they monitor the space around you. From Forward Collision Avoidance Assist, to protect you from hazards in front, to rear-facing sensors that alert you to pedestrians or objects behind, the New SANTA FE comes with technology to make every journey safer and more enjoyable.



# The language of colours.

From Glacier White to Lava Orange, choose the colour that calls to you.



Glacier White – Pearl



Lagoon Blue – Pearl



Lava Orange – Pearl



Phantom Black – Pearl



Taiga Brown – Pearl



White Cream – Pearl





Magnetic Force – Metallic



Rain Forest – Metallic



Typhoon Silver – Metallic

## Dimensions\*.



1,710 mm



2,765 mm  
4,785 mm



1,900 mm (Excluding Door Mirrors)

\* Wheels shown not to UK Specification.

All cars shown: New SANTA FE Hybrid Ultimate.



# Accessories for the life of your drive.

Choose from a range of selected extras for added protection and increased load carrying on the New SANTA FE, with smart accessories that match your lifestyle.



Roof Bars



Door Mirror Caps



Carpet Mats

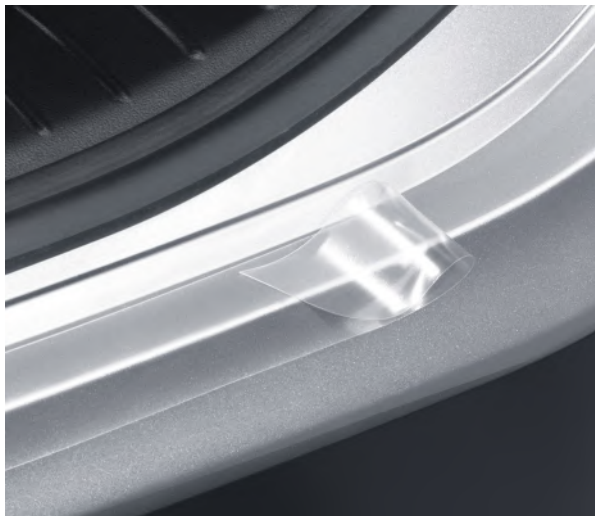


Rear Mud Guards



Trunk Liner





Rear Bumper Protection Foil



Roof Box



Tow Bar



Bike Carrier Pro



Front Mud Guards



## New SANTA FE Premium:

---

- 17" Alloy Wheels (19" for Plug-in Hybrid)
- Air Conditioning - Climate Control (Dual Zone)
- Blind Spot Collision Avoidance Assist- Rear (BCA)
- BlueLink™
- Bluetooth® Connectivity with Voice Recognition
- Cruise Control - Smart Adaptive Speed Control with Stop & Go
- eCall
- Forward Collision Avoidance Assist - Junction Turning
- Forward Collision Avoidance assist- Car Pedestrian / Cyclist
- Front Seats - Heated
- Heated Steering Wheel
- Intelligent Speed Limit Warning
- Parking - Rear View Monitor and Parking Guidance Dynamic
- Parking Sensors - Front and Rear
- Phone Connection - Android Auto™ - Apple CarPlay™
- Smart Key - Keyless Entry with Engine Start/Stop Button
- Speakers - KRELL Premium Audio
- Touchscreen Satellite Navigation (10.25"), MapCare and LIVE Services
- Wireless Phone Charging Pad

Car shown: New SANTA FE Premium in Taiga Brown.





New SANTA FE Ultimate offers the following key features over Premium:

---

- 19" Alloy Wheels
- Air Conditioning – Rear manual temperature control
- Blind Spot View Monitor (BVM)
- Driver's Seat Memory Function
- Front Seats - Ventilated
- Head Up Display (HUD)
- Highway Drive Assist
- Parking Collision Avoidance Assist – Reverse (PCA)
- Parking System - Surround View Monitor
- Rear Cross Traffic Alert with Brake Assist (RTCA)
- Rear Door Blinds - Manual
- Remote Smart Parking

- Sunroof - Panoramic Glass Electric Tilt and Slide
- Supervision Cluster - 12.3" Full TFT

**Optional Luxury Pack**

- Artificial leather wrapped dashboard
- Genuine brushed aluminium accents on centre console
- Light Grey Nappa Leather Upholstery
- Suede Headliner

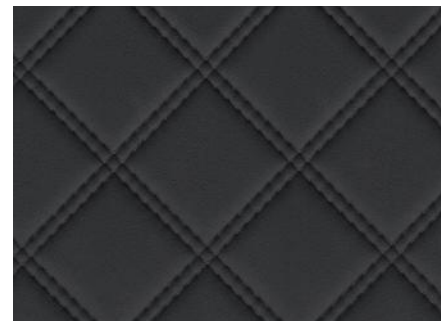
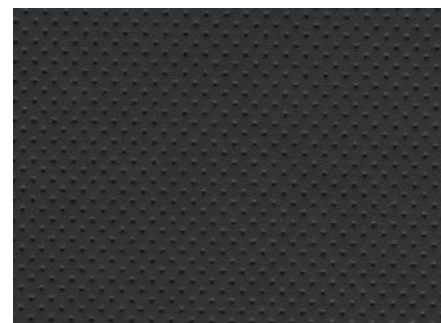
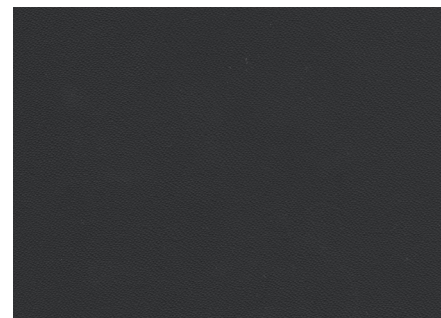
Car shown: New SANTA FE Ultimate in Typhoon Silver.

# Interior colour combinations.

Tone and texture personalised for comfort.

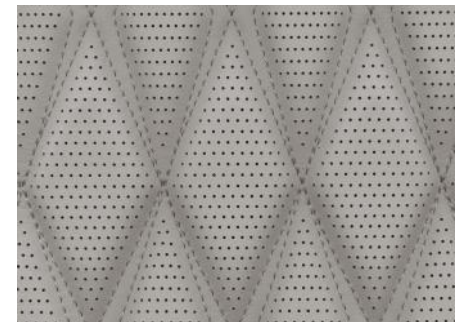
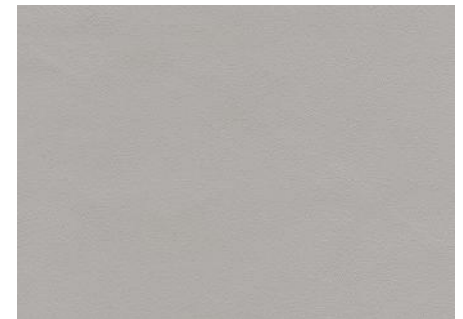
## **Black One-tone** – Leather Seat

Available on all trim levels.





**Light Grey** - Two-tone Nappa Leather Seat  
Available on Luxury Pack only.



Specifications shown in this brochure are based upon the latest available information at the time of printing. The colours and finishes reproduced in this brochure are subject to the limitations of the printing process and may vary from the actual colour and paint finish.

In line with our policy of continual product improvement Hyundai Motor UK Ltd reserves the right to make changes at any time, without notice, to prices, colours, material, design, shape, specifications and models, and to discontinue items. For the latest details, please consult your Hyundai dealer.

Your local Hyundai dealer:  
[www.hyundai.co.uk/dealer-locator](http://www.hyundai.co.uk/dealer-locator)  
Customer enquiries: 0800 981 981



Hyundai Motor UK Ltd  
Ground Floor Birchwood Building The Office Park  
Springfield Drive, Leatherhead KT22 7LP  
T: 0800 981 981 [www.hyundai.co.uk](http://www.hyundai.co.uk)

Car shown: New SANTA FE Ultimate in Taiga Brown.  
HB0012 03/21